

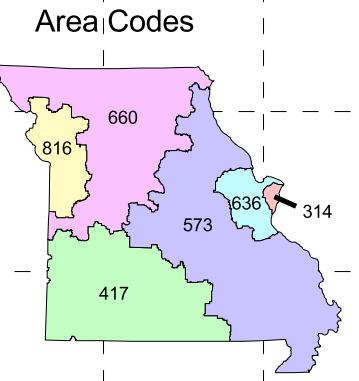
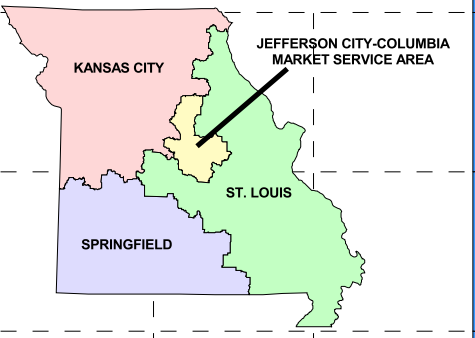
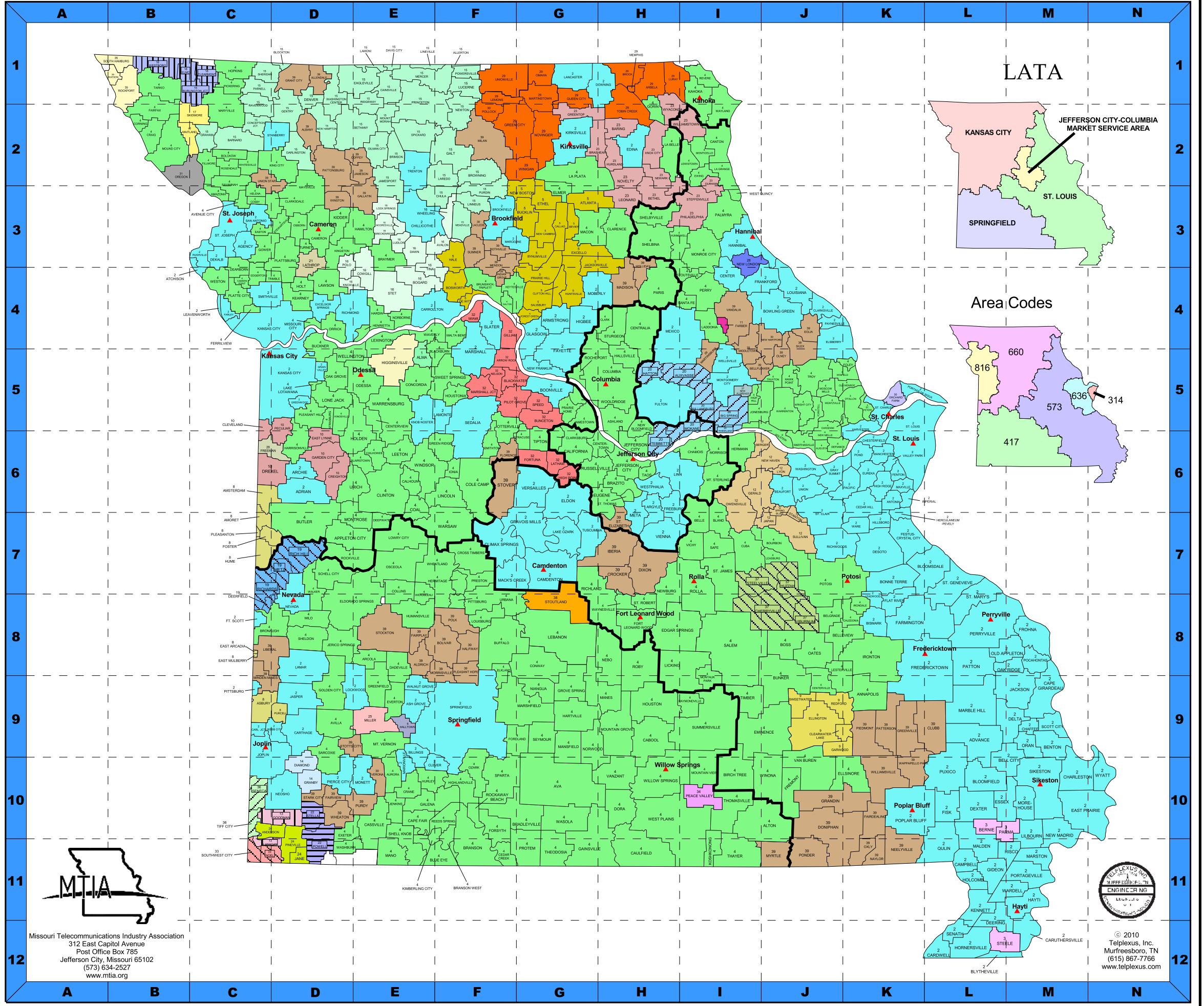
# MISSOURI

## Incumbent Local Exchange Carriers

1. Alma Telephone Company
2. AT&T Missouri
3. BPS Telephone Company
4. CenturyLink
5. Chariton Valley Telephone Corporation
6. Choctaw Telephone Company
7. Citizens Telephone Company
8. Craw-Kan Telephone Cooperative, Inc.
9. Ellington Telephone Company
10. FairPoint Communications Missouri, Inc.
11. Farber Telephone Company
12. Fidelity Telephone Company
13. Goodman Telephone Company
14. Granby Telephone Company
15. Grand River Mutual Telephone Corporation
16. Green Hills Telephone Corporation
17. Holway Telephone Company
18. Iamo Telephone Company, Inc.
19. KLM Telephone Company
20. Kingdom Telephone Company
21. Lathrop Telephone Company
22. Le-Ru Telephone Company
23. Mark Twain Rural Telephone Company
24. McDonald County Telephone Company
25. Miller Telephone Company
26. MoKan Dial, Inc.
27. New Florence Telephone Company
28. New London Telephone Company - TDS
29. Northeast Missouri Rural Telephone Company
30. Orchard Farm Telephone Company - TDS
31. Oregon Farmers Mutual Telephone Company
32. Otelco, Inc.
33. Ozark Telephone Company
34. Peace Valley Telephone Company, Inc.
35. Rock Port Telephone Company
36. Seneca Telephone Company
37. Steelville Telephone Exchange, Inc.
38. Stoutland Telephone Company - TDS
39. Windstream Communications



LATA Boundaries



Missouri Telecommunications Industry Association  
 312 East Capitol Avenue  
 Post Office Box 785  
 Jefferson City, Missouri 65102  
 (573) 634-2527  
[www.mtia.org](http://www.mtia.org)



© 2010  
 Telplexus, Inc.  
 Murfreesboro, TN  
 (615) 867-7766  
[www.telplexus.com](http://www.telplexus.com)

NOTE: THIS MAP IS INTENDED TO PROVIDE A GENERAL PERSPECTIVE OF EXCHANGE, LATA, AND AREA CODE BOUNDARIES AND REPRESENTS A NEAR APPROXIMATION ONLY. IT IS NOT TO BE CONSIDERED A MAP SHOWING THE LEGAL BOUNDARIES BETWEEN ANY TWO EXCHANGES.